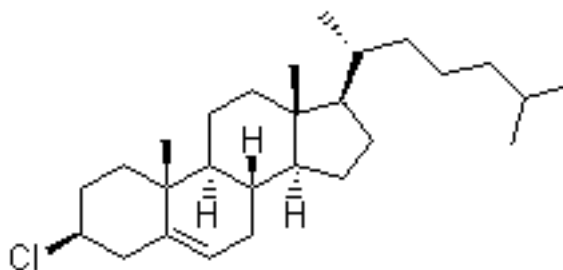


Cholesteryl chloride

Identification

Name	Cholesteryl chloride
Synonyms	3beta-Chlorocholest-5-ene
Chinese Names	氯化胆固醇; 胆固醇氯化物

Molecular Structure



Molecular Formula	$C_{27}H_{45}Cl$
Molecular Weight	405.10
CAS Registry Number	910-31-6
EINECS	213-004-4

Properties

Melting point	93-96 ° C
alpha	-30 ° (c=1, chloroform)

Safety Data

Safety Description S22;S24/25 [Details](#)